

SS26

WOMAN LINES SHEET





**WILD ATTITUDE.
PURE CHARACTER.**

WHAT DO WE WANT TO COMMUNICATE?

That character is something you recognize at first glance.
That materials can have a soul—and know how to show it.
We selected lightweight haircalf, perfect for summer, and printed them with refined animalier patterns: soft leopard spots, delicate zebra stripes, and natural textures.
Wild prints, elevated by design.

Each shoe speaks for itself—no explanation needed.





**NOT JUST LEATHER.
BUT LIGHT, COLOR, IDENTITY**

WHAT DO WE WANT TO COMMUNICATE?

That color is an expression.

That metal is not just material, but light, reflection, energy.
We chose laminated leathers in vibrant tones – soft golds, liquid silvers, metallic pinks, bold sky blues – and turned them into iconic details.
Not to shine more, but to shine differently.

Each shoe becomes an accent, a flash of character, a way to stand out without raising your voice.





LUXURY FABRICS. URBAN SOUL.

WHAT DO WE WANT TO COMMUNICATE?

That originality is a choice.

That even an everyday accessory like a sneaker can become something unique, personal, and irreplaceable.

We've taken fabrics born for haute couture – tailored stripes, floral satins, woven textures – and placed them where no one expects them: on your feet.

Not to shock, but to tell a story.

Each sneaker becomes a fragment of style, a story stitched to your skin, a detail that speaks of you before you even say a word



SS26

woman - CANNES



SS26

woman - CANNES

SERAFINI
OO



PE26DCAN01

CANNES - TIMELESS CHIC

Second lace inside: WHITE SWAN



PE26DCAN04

CANNES - BUD GREEN

Second lace inside: WHITE SWAN



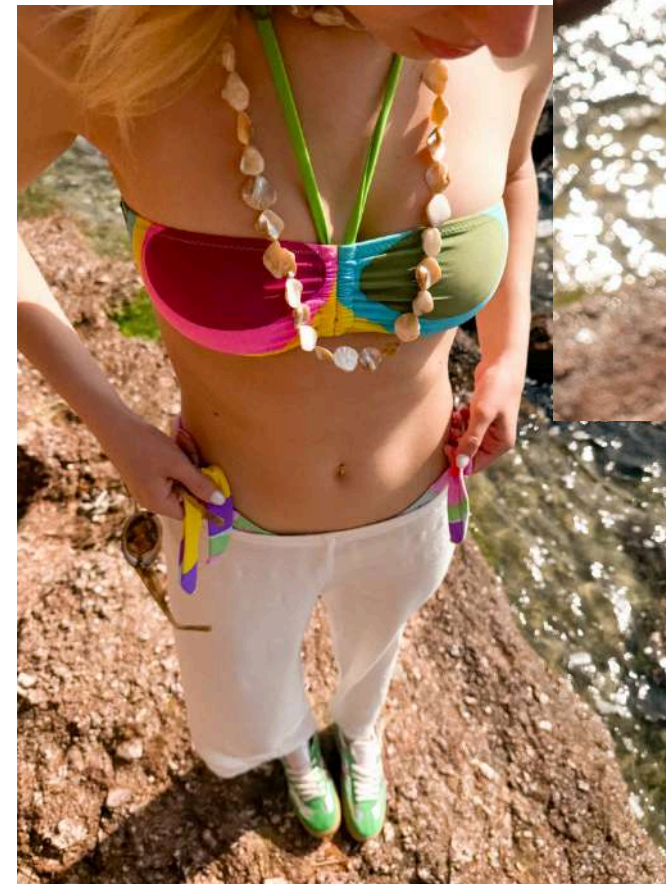
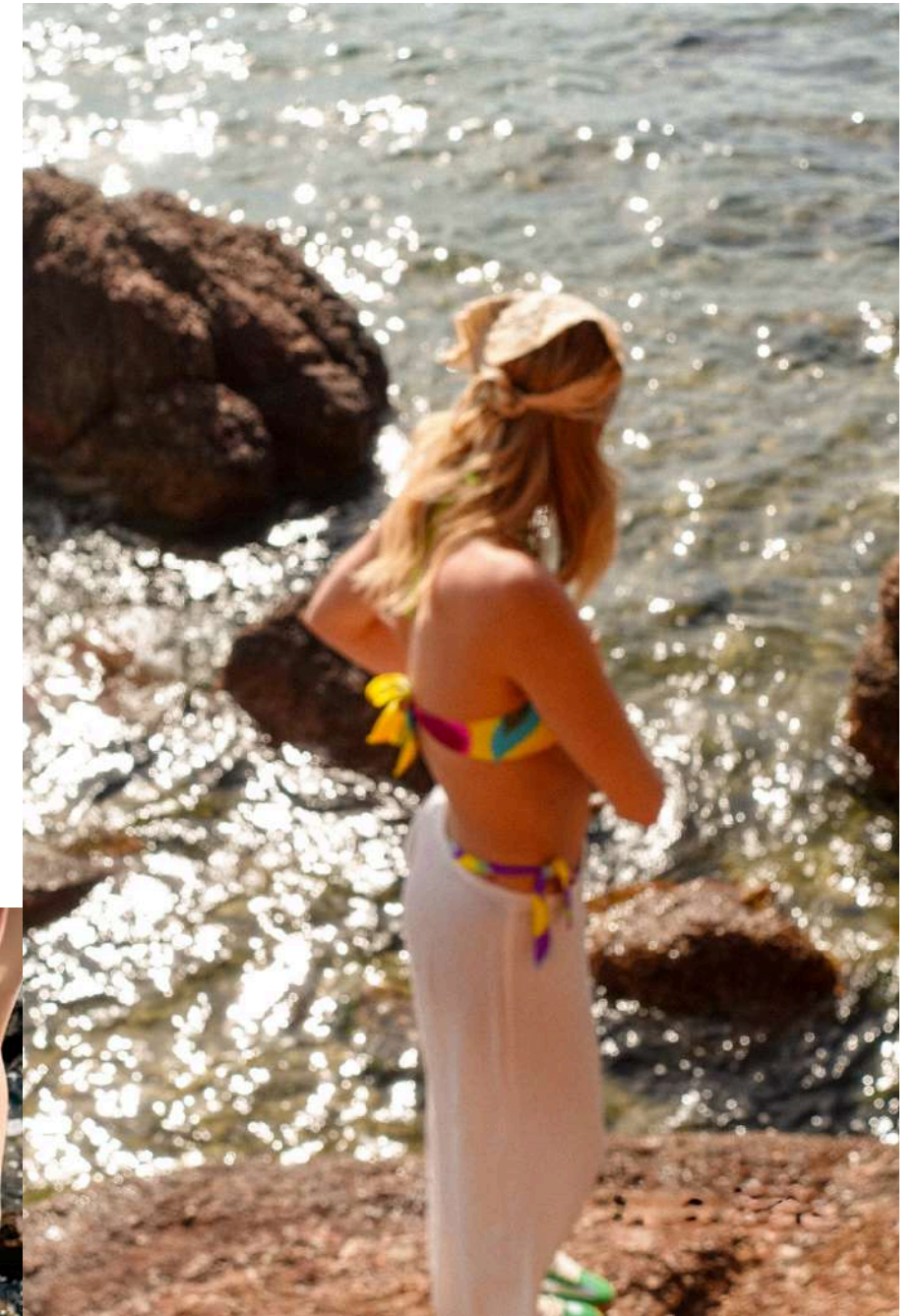
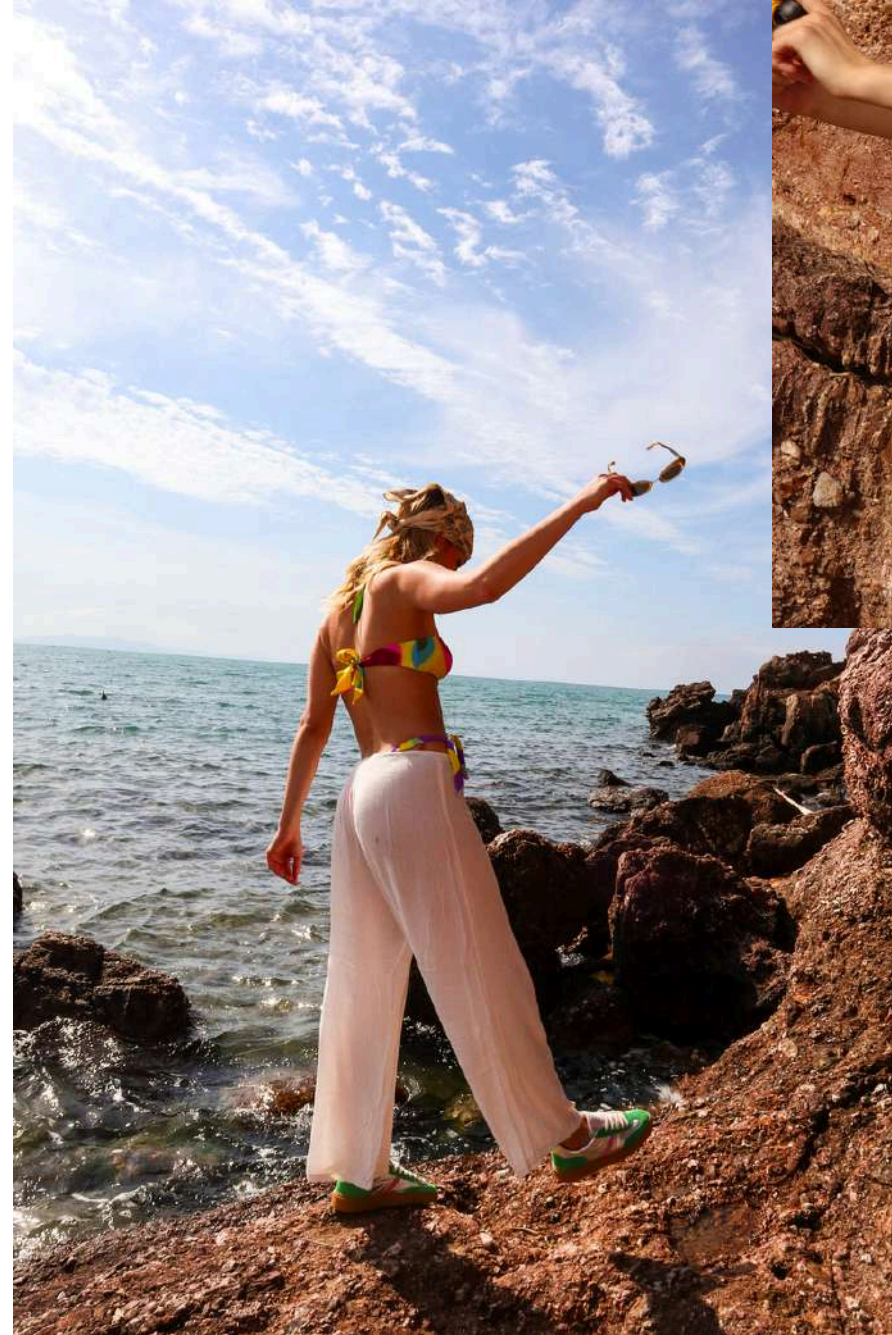
PE26DCAN05

CANNES - CRYSTAL PINK

Second lace inside: WHITE SWAN

SS26

woman - COURT



SS26

woman - COURT

SERAFINI
OOO



APE26DCOU01

COURT - BEIGE CHECKERE COLORS
Second lace inside: WHITE SWAN



fabric composition: 100% Cotton



PE26DCOU07

COURT - BREEZY COW
Second lace inside: WHITE SWAN



PE26DCOU8

COURT - BLOSSOM VIBE BEIGE
Second lace inside: WHITE SWAN



PE26DCOU10

COURT - METALLIC SPOTTED
Second lace inside: WHITE SWAN



PE26DCOU11

COURT - GOLD EARTHY
Second lace inside: WHITE

SS26

woman - COURT

SERAFINI
OOO



PE26DCOU50

COURT - GOLD PINK

Second lace inside: BLUSH



PE26DCOU58

COURT - WHITE GREY BLACK

Second lace inside: WHITE SWAN

SS26

woman - COPENAGHEN VINTAGE



SS26

woman - COPENAGHEN VINTAGE



PE26DCVN02

COPENAGHEN VINTAGE - ROSY
COWHIDE DREAM
Second lace inside: WHITE SWAN

SERAFINI
OO



SS26

woman - COPENAGHEN VINTAGE

SERAFINI



Limited Edition

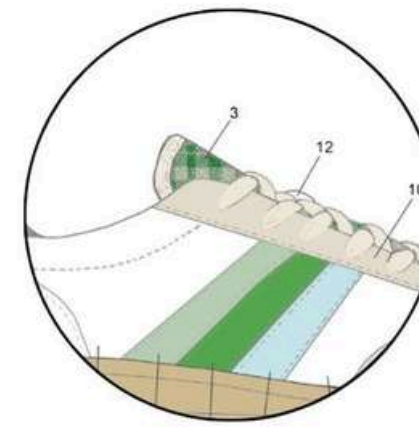
A POSTCARD FROM LA DOLCE VITA

WHAT DO WE WANT TO COMMUNICATE?

That some places aren't just destinations they're states of mind: Capri, Portofino, Saint-Tropez.

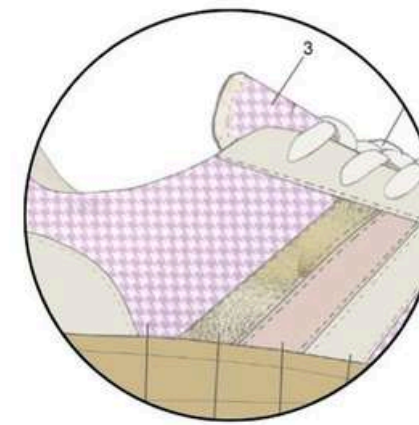
We imagined three shoes as postcards from a timeless summer. The same fresh, tailored check fabric reinterpreted in three colorways: sea green like the gardens of Portofino, blush pink like a sunset in Capri, vibrant orange like the late- afternoon light in Saint-Tropez.

Not a nod to the past, but an ode to a style that never fades. Limited edition, eternal spirit.



PORTOFINO

"Sea green like the gardens of Portofino"



CAPRI

"Blush pink like a sunset in Capri"



ST.TROPEZ

"Vibrant orange like the late-afternoon light in Saint-Tropez."



SS26

woman - COPENAGHEN VINTAGE



PE26DCVN05

COPENAGHEN VINTAGE - PORTOFINO
LUSH CHECK

Second lace inside: WHITE SWAN



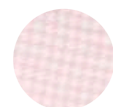
fabric composition: 75 % Cotton -
17 % Polyamide - 8 % Silk



PE26DCVN07

COPENAGHEN VINTAGE - CAPRI
GINGHAM BLUSH

Second lace inside: PIGGY PINK



fabric composition: 100% Cotton



PE26DCVN06

COPENAGHEN VINTAGE - ST. TROPEZ
SUNSET FABRIC

Second lace inside: PUMPPKIN



fabric composition: 75 % Cotton -
17 % Polyamide - 8 % Silk



SERAFINI
OO

SS26

woman - KENSINGTON



SS26

woman - KENSINGTON

SERAFINI
OO



PE26DKEN01

KENSINGTON - SAGE

Second lace inside: WHITE SWAN



PE26DKEN02

KENSINGTON - GRANOLA

Second lace inside: COTTON PINK



PE26DKEN03

KENSINGTON - OATMEAL

Second lace inside: OMPHALODES



PE26DKEN04

KENSINGTON - LEO

Second lace inside: COFFE



PE26DKEN05

KENSINGTON - GARDENIA

Second lace inside: LIME

SS26

woman - KENSINGTON

SERAFINI
OO



PE26DKEN31

KENSINGTON - SAGE ESSENTIAL
Second lace inside: WHITE SWAN



PE26DKEN32

KENSINGTON - GRANOLA ESSENTIAL
Second lace inside: COTTON PINK



PE26DKEN033

KENSINGTON - OATMEAL ESSENTIAL
Second lace inside: OMPHALODES



PE26DKEN34

KENSINGTON - LEO ESSENTIAL
Second lace inside: COFFEE



PE26DKEN35

KENSINGTON - GARDENIA ESSENTIAL
Second lace inside: LIME

SS26

woman - MALIBU



SS26

woman - MALIBU



PE26DMAL01

MALIBU - WAVE BLUE SCALES

Second lace inside: WHITE SWAN



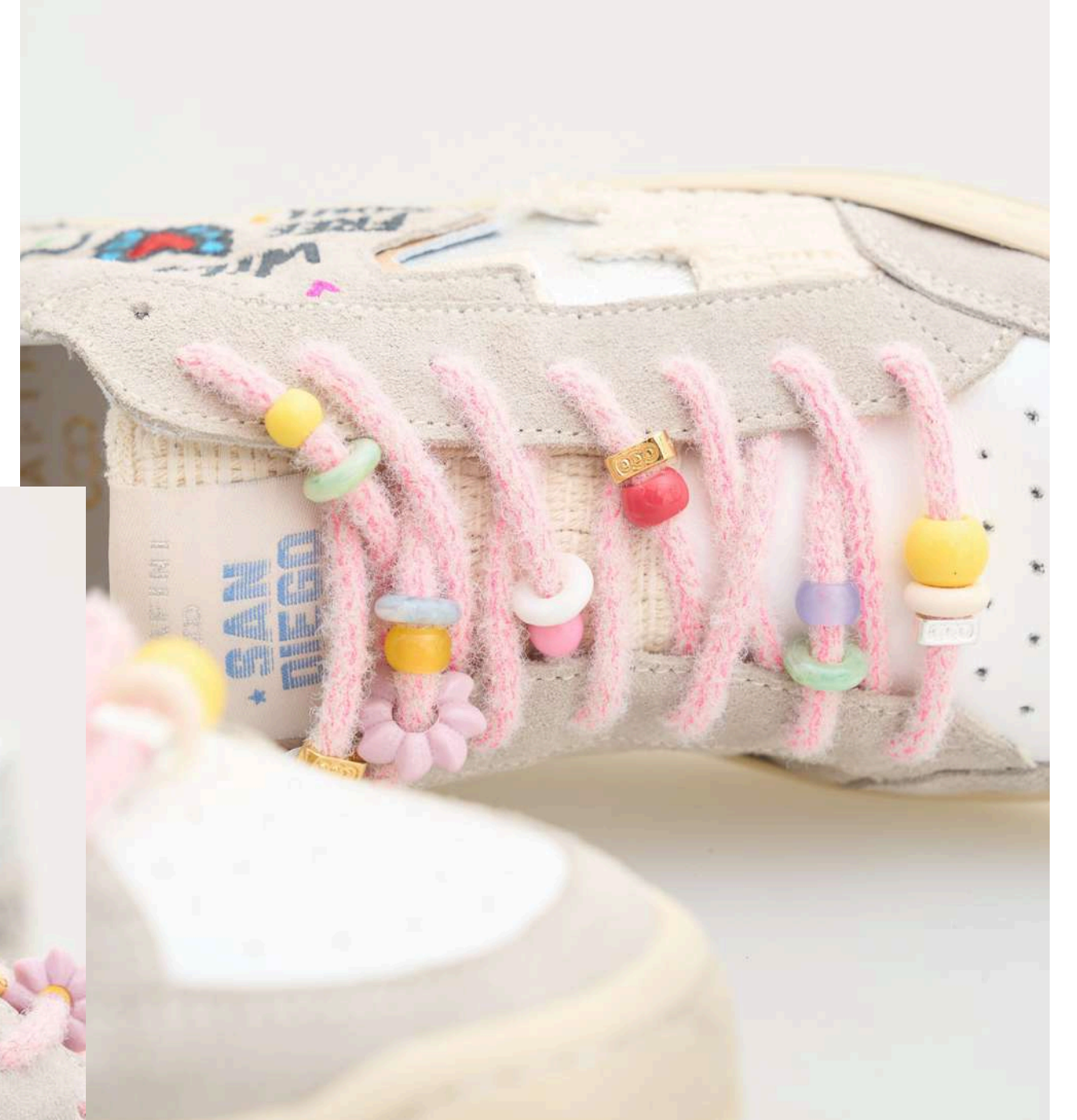
fabric composition: 75% Nylon -
25% Cotton



SERAFINI
OO

SS26

woman - SAN DIEGO LOW



SS26

woman - SAN DIEGO LOW



PE26DSDL01

SAN DIEGO LOW - COLORFUL GRAFFITI



fabric composition: 100% Cotton



PE26DSDL02

SAN DIEGO LOW - THE STRIPED ONE



fabric composition: 96% Cotton -
3% Polyester - 1% Other fibres



PE26DSDL03

SAN DIEGO LOW - ELECTRIC BLUE
SAND



PE26DSDL04

SAN DIEGO LOW - RODEO



PE26DSDL05

SAN DIEGO LOW - GOLDEN HAY



fabric composition: 75% Nylon -
25% Cotone



fabric composition tongue:
100% Cotton

PE26DSDL06

SAN DIEGO LOW - GREEN BLUE
MOSAIC



fabric composition: 80% Cotone -
23% Poliestere - 11% Poliammide -
6% Acrilico

SS26

woman - TORINO



SS26

woman - TORINO

SERAFINI
OOO



PE26DTOR01

TORINO - SANDY BLUSH

Second lace inside: WHITE SWAN



PE26DTOR03

TORINO - COWHIDE SOFTBEIGE

Second lace inside: WHITE SWAN



PE26DTOR04

TORINO - WILD KHAKI

Second lace inside: WHITE SWAN



PE26DTOR05

TORINO - DREAMY PASTEL CHECK

Second lace inside: WHITE SWAN



PE26DTOR06

TORINO - FUZZY CREAM SKY

Second lace inside: WHITE SWAN



fabric composition: 90% Cotton 10% Elastan

SS26

woman - VIBE



SS26

woman - VIBE



PE26DVIB01

VIBE - BANANA HAY

Second lace inside: WHITE SWAN



PE26DVIB03

VIBE - SILVER PRISM LEOPARD

Second lace inside: WHITE



PE26DVIB04

VIBE - BLOOM HYBRID

Second lace inside: WHITE



fabric composition: 100% PU



PE26DVIB05

VIBE - ACQUA WILD PRINT

Second lace inside: WHITE SWAN



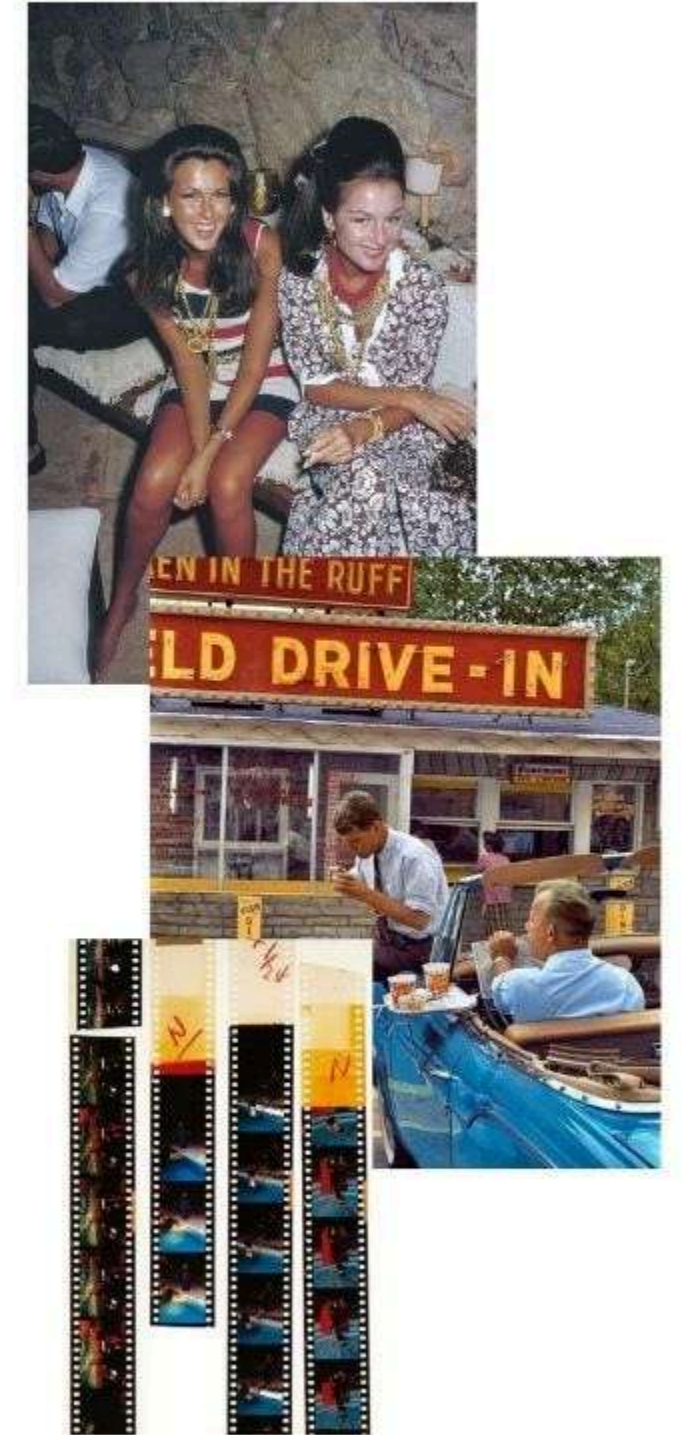
ORIGIN AS A CHOICE.

WHAT ARE WE TRYING TO COMMUNICATE?

That looking back isn't nostalgia—it's respect.
That origins carry a timeless charm.
The RM60 is a tribute to where it all began: a deconstructed sneaker, lived-in, purposefully imperfect.
The lines are soft, the surfaces show signs of washes and treatments that speak of time and character.
A vintage aesthetic—filtered through a modern lens.
Like the beautiful things of the past that return, not to imitate, but to inspire.
An icon, reimagined. For those who know the past isn't meant to be copied—it's meant to be understood.

SS26

available sizes from 36 to 46 - RM60



CONCEPT, COLOUR & INSPIRATION
SERAFINI

SS26

available sizes from 36 to 46 - RM60

SERAFINI
OO



PE26XRM01

RM60 - COTTON CANDY



PE26XRM02

RM60 - AIRY



PE26XRM03

RM60 - VERDANT



PE26XRM04

RM60 - CREAM PETALS



PE26XRM05

RM60 - DUSTY SILVER



PE26XRM06

RM60 - KHAKI JAPAN WAVE

SS26

available sizes from 36 to 46 - RM60

SERAFINI
OOO



PE26XRM07

RM60 - BEIGE SURF VIBES



PE26XRM08

RM60 - RISING RED JAPAN



PE26XRM09

RM60 - BLUE FLAME JAPAN

SS26

available sizes from 36 to 46 - RM60



PE26XRM51

RM60 - WHITE BEIGE TRICOLOR



PE26XRM52

RM60 - BLUETTE SILVER VINTAGE



PE26XRM55

RM60 - TABACCO MILK PINK



PE26XRM57

RM60 - BROWN LEOPARD BLUE



PE26XRM58

RM60 - BLUE LEOPARD GOLD

SS26

woman - SOPHIA



SS26

woman - SOPHIA

SERAFINI
OO



PE26DSOP01

SOPHIA - PINK VICHY



PE26DSOP02

SOPHIA - ACQUAMARINE PINK VICHY



PE26DSOP03

SOPHIA - RED BLUE FLOWERS



PE26DSOP04

SOPHIA - DENIM



PE26DSOP05

SOPHIA - IRIDESCENT

SS26

woman - ANITA



SS26

woman - ANITA

SERAFINI
OO



PE26DANI01
ANITA - BLUE



PE26DANI02
ANITA - BEIGE



PE26DANI03
ANITA - TOBACCO

SS26

woman - JACKIE

SS26

woman - JACKIE

SERAFINI



PE26DJAC51

JACKIE - BLUE



PE26DJAC52

JACKIE - BEIGE



PE26DJAC53

JACKIE - TABACCO

CONTACT

ROYAL TRADING s.r.l. - Via I. Newton, 62 - 52100 Arezzo, Italy

Tel. +39 (0)575 984071

P.Iva 01313280511 / PEC destinatario sdi-gif@pcert.it

sales.serafini@royaltrading.it

customerservice@royaltrading.it

DIGITAL SHOWROOM

WWW.SERAFINI.APP

ID: Welcome

PW: SerafiniSS26



@serafiniofficial